



www.soiseek.com — IC Seeker

IC Search

Try Luck

Tips: Try multiple keywords. e.g. Atmel 8 bit microcontroller

[IC Catalog](#) - [About Soiseek](#) - [Feedback](#)

[Make Soiseek Your Homepage](#)

Copyright Notice:

All the datasheets that Soiseek provides are edited by their manufacturers.

All copyrights of the datasheets reserved by their manufacturers.

Soiseek is NOT responsible for the correctness of any datasheet contents.

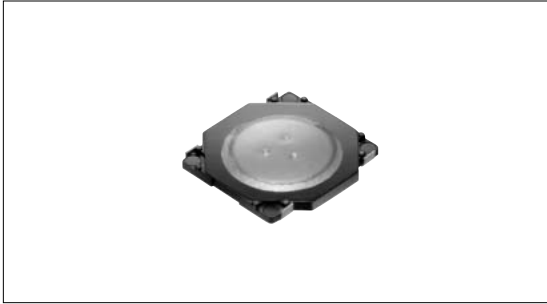
Please tell us if any advices. We are always dedicated to offering the best search experience.

Contact us: <http://www.soiseek.com/tellus>

TACT Switch™ 3.7mm Square Low-profile (Surface Mount Type) SKRW Series



Low-profile and compact size of 3.7×3.7×0.35mm.



Detector

Push

Slide

Rotary

Encoders

Power

Dual-in-line
Package Type

TACT Switch™

Custom-
Products

Sharp
Feeling

Soft
Feeling

Snap-in
Type

Surface
Mount Type

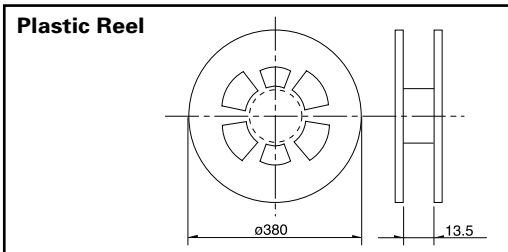
Radial
Type

Product Line

| Product No. | Operating force | Operating direction | Travel (mm) | Rating (max.) | Rating (min.) | Operating life (5mA 5V DC) | Initial contact resistance | Minimum order unit (pcs.) |
|-------------|-----------------|---------------------|-------------|----------------|---------------|----------------------------|----------------------------|---------------------------|
| SKRWAE030 | 1.57N | Vertical | 0.15 | 50mA 12V DC | 10μA 1V DC | 500,000cycles | 100m max. | 10,000 |
| SKRWAE030 | 2.35N | | | | | 50,000cycles | | |

Specification of Embossed Taping Package (Taping Packaging for Auto-insertion)

Reel Size Unit:mm



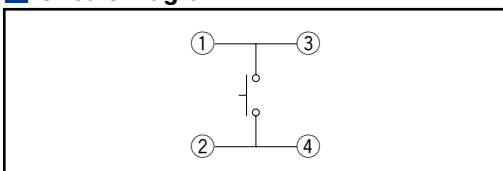
| Number of packages (pcs.) | | | Tape width (mm) |
|-----------------------------|---------------|------------------------|-------------------|
| 1 reel | 1 case /Japan | 1 case /export packing | |
| 10,000 | 100,000 | 100,000 | 12 |

Dimensions

Unit:mm

| Style | PC board land dimensions (Viewed from switch mounting face) |
|-------|---|
| | |

Circuit Diagram



Note

1. Please place purchase orders for taping products per minimum order unit (1 reel or a case).
2. For 330mm diameter reel requirements, please contact us.

Refer to P.306 for soldering conditions.

List of Varieties

Sharp Feeling Type

| Series | SKQU | SKQB | SKQE | SKHC | SKHK | SKRW | SKRM | SKQR | SKRB | SKRR | SKQG | | |
|---------------------------|--|--|-----------------------------|--|-----------|---------------------------|-----------|-------------|------|------|---------------------------|-------------|-----|
| Detector | Photo | | | | | | | | | | | | |
| Push | Type Snap-in | | | | | Type Surface mount | | | | | | | |
| Slide | Features 4-direction switch + push switch | | Water-proof Horizontal type | | Long Life | | Long Stem | Low-profile | | | Low-profile and long life | Low-profile | |
| Rotary | Operating direction | Vertical | | | | | | | | | | | |
| Encoders | | Horizontal | | | | | | | | | | | |
| Power | Dimensions (mm) | W | 10 | 11.5 | 12 | | 3.7 | 4.5 | 4.8 | | 7.5 | 5.2 | |
| Dual-in-line Package Type | | D | | 11.9 | | | | | | | 7 | | |
| TACT Switch™ | | H | 7.1 | 11.3 | 4.3 | | 12 | 0.35 | 0.4 | 0.5 | 0.55 | 0.6 | 0.8 |
| Custom-Products | Operation force coverage | | 1N | See the relevant pages for respective product descriptions | • | ↕ | ↕↕ | • | ↕ | ↕ | ↕↕ | ↕ | ↕↕ |
| | | | 5N | | | | | | | | | | |
| | Ground terminal | | | | | | | | | | | | |
| | Operating temperature range -30 to +85 | | | | | | | | | | | | |
| Sharp Feeling | Electrical performance | Insulation resistance 100M min. 100V DC | | | | | | | | | | | |
| Soft Feeling | | Voltage proof 250V AC for 1min. SKRW/RM/RB/RR : 100V AC for 1min. | | | | | | | | | | | |
| Snap-in Type | Durability | Vibration 10 to 55 to 10Hz/min., the amplitude is 1.5mm for all the frequencies, in the 3 direction of X, Y and Z for 2hours respectively | | | | | | | | | | | |
| Surface Mount Type | | Lifetime Shall be in accordance with individual specifications. | | | | | | | | | | | |
| Radial Type | Environmental performance | Cold -30 ± 2 for 96h | | | | | | | | | | | |
| | | Dry heat 80 ± 2 for 96h | | | | | | | | | | | |
| | | Damp heat 60 ± 2 , 90 to 95%RH for 96h | | | | | | | | | | | |
| | Page | 482 | 265 | 267 | 268 | 270 | 271 | 272 | 273 | 274 | 275 | 276 | |

W : Width. The most outer dimension excluding terminal portion.
 D : Depth. The most outer dimension excluding terminal portion.
 H : Height. The minimum dimension if there are variances.

TACT Switch™ Soldering Conditions306
 TACT Switch™ Cautions307
 Product Line of Knob for TACT Switch™308

Note

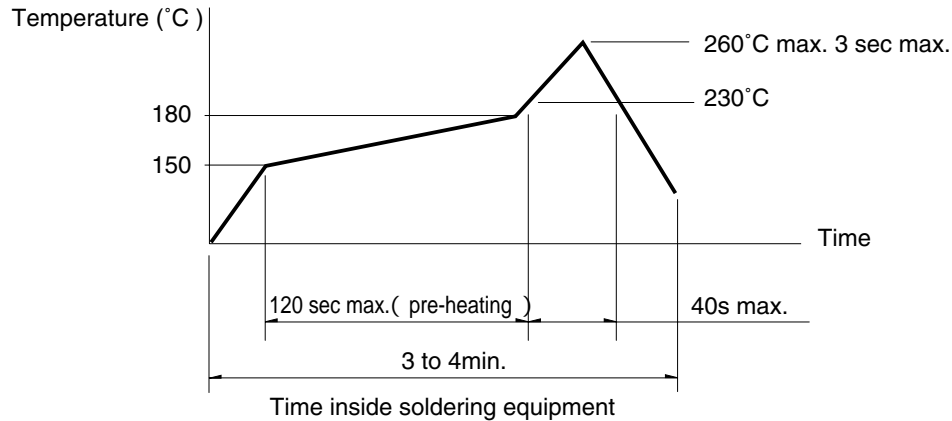
The automotive operating temperature range to be individually discussed upon request.

Soldering Conditions

Condition for Reflow

Available for Surface Mount Type.

1. Heating method: Double heating method with infrared heater.
2. Temperature measurement: Thermocouple 0.1 to 0.2 CA(K) or CC(T) at solder joints(copper foil surface). A heat resistive tape should be used to fix thermocouple.
3. Temperature profile



Note

1. The above temperature shall be measured on the mounting surface of a PC board. There are cases where the PC board's temperature greatly differs from that of the switch, depending on the material, size, thickness of PC boards and others. The above-stated conditions shall also apply to switch surface temperatures.
2. Soldering conditions differ depending on reflow soldering machines. Prior verification of soldering condition is highly recommended.

Conditions for Auto-dip

Available for Snap-in Type and Radial Type
(Except SKHJ, SKHL, SKQJ, SKQK, SKEG series)

| Items | Condition |
|------------------------|--|
| Flux built-up | Mounting surface should not be exposed to flux |
| Preheating temperature | Ambient temperature of the soldered surface of PC board. 100 max. |
| Preheating time | 60s max. |
| Soldering temperature | 260 max. |
| Duration of immersion | 5s max. |
| Number of soldering | 2times max. |

Notes

1. Consult with us for availability of TACT Switch™ washing.
2. Prevent flux penetration from the top side of the TACT Switch™.
3. Switch terminals and a PC board should not be coated with flux prior to soldering.
4. The second soldering should be done after the switch is stable with normal temperature.
5. Use the flux with a specific gravity of min 0.81.
(EC-19S-8 by TAMURA Corporation, or equivalents.)

Manual Soldering (Except SKRT Series)

| Items | Condition |
|----------------------------|-----------|
| Soldering temperature | 350 max. |
| Duration of soldering | 3s max. |
| Capacity of soldering iron | 60W max. |

Detector

Push

Slide

Rotary

Encoders

Power

Dual-in-line
Package Type

TACT Switch™

Custom-
ProductsSharp
FeelingSoft
FeelingSnap-in
TypeSurface
Mount TypeRadial
Type